



BUILT ON TRADITION
ENGINEERED FOR
THE FUTURE

AMERICAN-GRADE QUALITY, GLOBALLY RECOGNIZED
MINI EXCAVATORS AND SKID STEERS

AMERICAS
YUCHAI
HEAVY INDUSTRY
— Since 1989



YUCHAI U17

ENGINE POWER 15.8 HP/2300 RPM

MACHINE WEIGHT 3,792 LBS

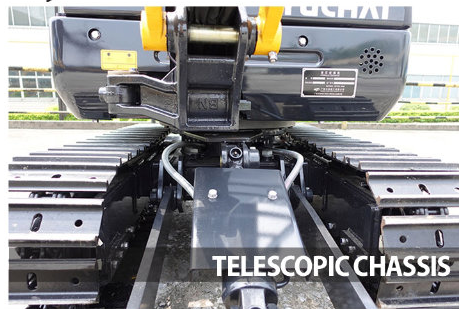
BUCKET CAPACITY 0.065 YD³



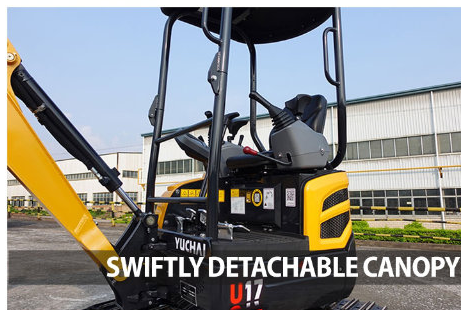
WWW.YUCHAIAMERICAS.COM
YUCHAI U17



IMPROVED COMFORT



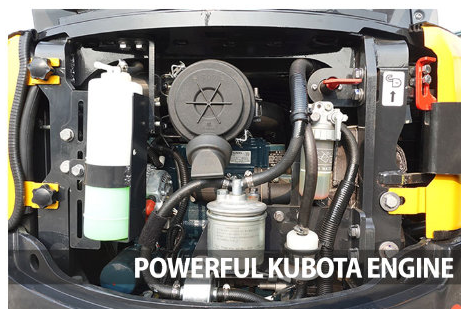
TELESCOPIC CHASSIS



SWIFTLY DETACHABLE CANOPY



EASY MAINTENANCE



POWERFUL KUBOTA ENGINE



EXCEPTIONAL UPHILL PERFORMANCE

Excavator Model – U17

Basic parameter

	Imperial Units	Metric Units
Machine weight	3,792 lbs	1720 kg
Bucket capacity	0.065 yd ³	0.05 m ³
Width of bucket	18.5 in	470 mm

Performance parameter

Engine model	Kubota D902-E4B	Kubota D902-E4B
Engine power	15.8 hp/2300 rpm	11.8 kW/2300 rpm
Max. Gradeability	30°	30°
Max. digging force of arm	2,136 lbf	9.5 kN
Max. digging force of bucket	3,866 lbf	17.2 kN
Traveling speed	1.2/2.5 mph	2.0/4.0 km/h
Max. hauling force	5,620 lbf	25 kN
Slewing speed of platform	8.5~10.5 rpm	8.5~10.5 rpm

Operating parameter

Max. digging height	141.7 in	3600 mm
Max. digging depth	90.9 in	2310 mm
Max. digging radius	154.7 in	3930 mm
Max. digging radius on ground level	152.4 in	3870 mm
Max. dumping height	97.8 in	2485 mm
Min. slewing radius	59.1 in	1500 mm
Max. vertical digging depth	75.6 in	1920 mm

Transportation dimension

Overall length	154.7 in	3930 mm
Overall width	39.0 in	990 mm
Overall height	92.1 in	2340 mm

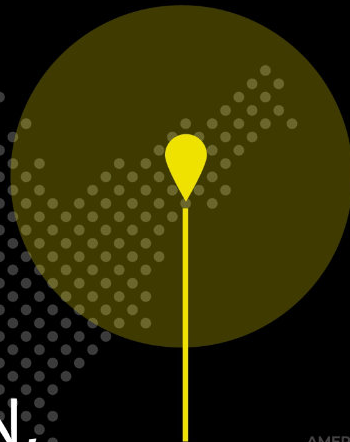
Other Parameter

Width of undercarriage	39.0/48.8 in	990/1240 mm
Length of track	63.0 in	1600 mm
Width of track	9.1 in	230 mm
Height between undercarriage and ground	5.9 in	150 mm
Height between platform and ground	17.7 in	450 mm
Platform tail turning radius	24.4 in	620 mm
Length to center of rollers	48.4 in	1230 mm
Fuel tank capacity	4.2 gal	16 L
Hydraulic oil tank capacity	4.2 gal	16 L
Track gauge	29.9/39.8 in	760/1010 mm
Working Pressure	3,481 psi	24 MPa
Ground Contact Pressure	137.8 psi	950 kPa
Arm length	72.0 in	1828 mm

Boom length

Steering head angle	60° (L) / 55° (R)	60° (L) / 55° (R)
Flow rate	17.0 gal/min	64.4 L/min

**BUILT ON TRADITION,
ENGINEERED FOR
THE FUTURE**



For More Information :
+1 (475) 470-7951



WWW.YUCHAIAMERICAS.COM

ORDER NOW

