



**BUILT ON TRADITION
ENGINEERED FOR
THE FUTURE**

AMERICAN-GRADE QUALITY, GLOBALLY RECOGNIZED
MINI EXCAVATORS AND SKID STEERS

AMERICAS
YUCHAI
HEAVY INDUSTRY
— Since 1989



YUCHAI U18

ENGINE POWER **20.4 HP/2500 RPM**

MACHINE WEIGHT **4,409 LBS**

BUCKET CAPACITY **0.065 YD³**



WWW.YUCHAIAMERICAS.COM

YUCHAI U18



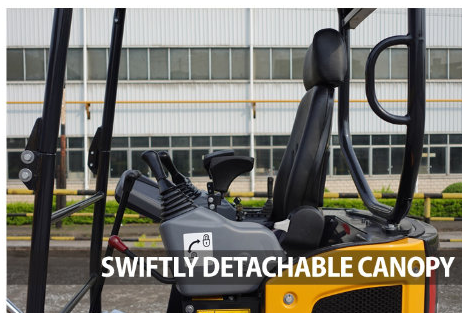
IMPROVED COMFORT



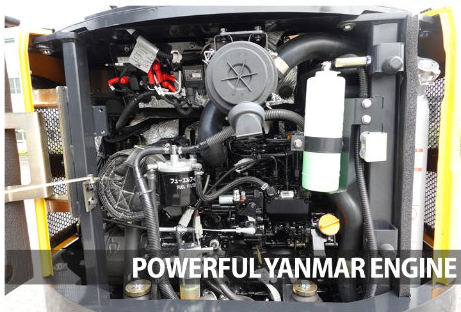
LOAD SENSITIVE SYSTEM



IMPROVED STABILITY



SWIFTLY DETACHABLE CANOPY



POWERFUL YANMAR ENGINE



RUBBER TRACKS

Excavator Model – U18

Basic parameter

	Imperial Units	Metric Units
Machine weight	3,968 lbs (canopy) 4,409 lbs (cabin)	1800 kg (canopy) 2000 kg (cabin)
Bucket capacity	0.065 yd ³	0.05 m ³
Width of bucket	18.5 in	470 mm

Performance parameter

Engine model	Yanmar 3TNV76 Yanmar 3TNV80F	Yanmar 3TNV76 Yanmar 3TNV80F
Engine power	19.4 hp/2400 rpm 20.4 hp/2500 rpm	14.5 kW/2400 rpm 15.2 kW/2500 rpm
Max. Gradeability	30°	30°
Max. digging force of arm	2,136 lbf	9.5 kN
Max. digging force of bucket	3,866 lbf	17.2 kN
Traveling speed	1.2/2.5 mph	2.0/4.0 km/h
Max. hauling force	4,946 lbf	22 kN
Slewing speed of platform	11 rpm	11 rpm

Operating parameter

Max. digging height	142.3 in	3615 mm
Max. digging depth	90.6 in	2300 mm
Max. digging radius	162.4 in	4125 mm
Max. digging radius on ground level	159.8 in	4060 mm
Max. dumping height	98.4 in	2500 mm
Min. slewing radius	66.5 in	1690 mm
Max. vertical digging depth	75 in	1905 mm
Max. dozer blade height	9.6 in	245 mm
Max. dozer blade depth	9.6 in	245 mm

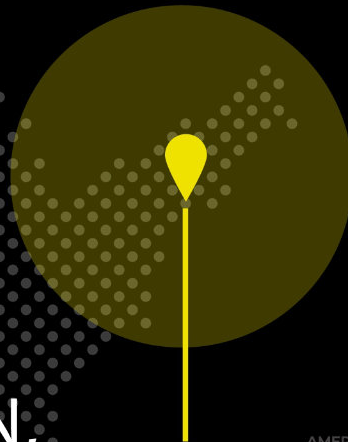
Transportation dimension

Overall length	147.6 in	3750 mm
Overall width	42.5 in	1080 mm
Overall height	92.5 in (Canopy) 93.1 in (Cabin)	2350 mm (Canopy) 2365 mm (Cabin)

Other Parameter

Width of undercarriage	42.5~55.1 in	1080~1400 mm
Length of track	62.4 in	1585 mm
Width of track	9.1 in	230 mm
Height between undercarriage and ground	5.7 in	145 mm
Height between platform and ground	18.3 in	465 mm
Platform tail turning radius	27.6 in	700 mm
Length to center of rollers	48.4 in	1230 mm
Fuel tank capacity	6.6 gal	25 L
Hydraulic oil tank capacity	5.7 gal	21.5 L
Track gauge	33.5 in / 46.1 in	850 mm / 1170 mm
Working Pressure	3,481 psi	24 MPa
Ground Contact Pressure	4.4 psi	30 kPa
Arm length	37.4 in	950 mm
Boom length	71.9 in	1828 mm
Steering head angle	60° (L) / 55° (R)	60° (L) / 55° (R)
Flow rate	16.3 gal/min	61.6 L/min

**BUILT ON TRADITION,
ENGINEERED FOR
THE FUTURE**



For More Information :
+1 (475) 470-7951



WWW.YUCHAIAMERICAS.COM

ORDER NOW

