



**BUILT ON TRADITION
ENGINEERED FOR
THE FUTURE**

AMERICAN-GRADE QUALITY, GLOBALLY RECOGNIZED
MINI EXCAVATORS AND SKID STEERS

AMERICAS
YUCHAI
HEAVY INDUSTRY
— Since 1989



YUCHAI U27

ENGINE POWER **20.4 HP/2500 RPM**

MACHINE WEIGHT **6,039 LBS**

BUCKET CAPACITY **0.12 YD³**



WWW.YUCHAIAMERICAS.COM

YUCHAI U27



PRECISE CONTROL



POWERFUL YANMAR ENGINE



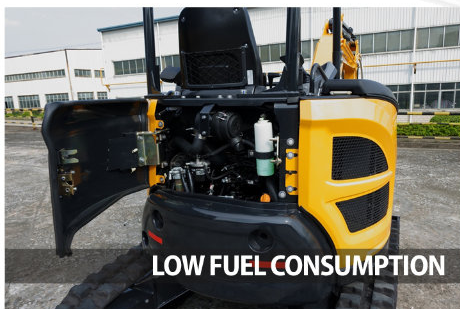
COMFORTABLE DRIVING EXPERIENCE



RUBBER TRACKS



LOAD SENSITIVE SYSTEM

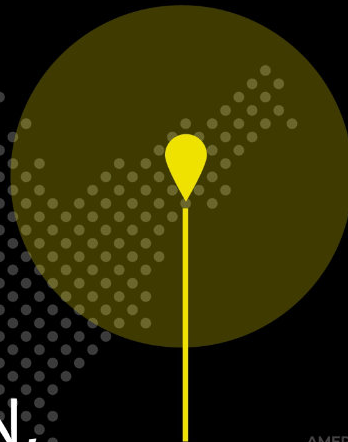


LOW FUEL CONSUMPTION

Excavator Model – U27

	Imperial Units	Metric Units
Basic parameter		
Machine weight	5,732 lbs (Canopy) 6,039 lbs (Cabin)	2600 kg (Canopy) 2740 kg (Cabin)
Bucket capacity	0.12 yd ³	0.09 m ³
Width of bucket	20.1 in	510 mm
Performance parameter		
Engine model	Yanmar 3TNV76 Yanmar 3TNV80F	Yanmar 3TNV76 Yanmar 3TNV80F
Engine power	19.4 hp/2400 rpm 20.4 hp/2500 rpm	14.5 kW/2400 rpm 15.2 kW/2500 rpm
Max. Gradeability	30°	30°
Max. digging force of arm	3,239 lbf	14.4 kN
Max. digging force of bucket	5,194 lbf	23.1 kN
Traveling speed	1.4/2.6 mph	2.3/4.2 km/h
Max. hauling force	5,845 lbf	26 kN
Slewing speed of platform	10~12 rpm	10~12 rpm
Operating parameter		
Max. digging height	164.2 in	4170 mm
Max. digging depth	100.0 in	2540 mm
Max. digging radius	177.9 in	4520 mm
Max. digging radius on ground level	173.2 in	4400 mm
Max. dumping height	109.4 in	2780 mm
Min. slewing radius	76.8 in	1950 mm
Max. vertical digging depth	88.2 in	2240 mm
Max. dozer blade height	13.4 in	340 mm
Max. dozer blade depth	14.0 in	355 mm
Transportation dimension		
Overall length	161.8 in	4110 mm
Overall width	59.1 in	1500 mm
Overall height	98.0 in	2490 mm
Other Parameter		
Width of undercarriage	59.1 in	1500 mm
Length of track	80.3 in	2040 mm
Width of track	9.8 in	250 mm
Height between undercarriage and ground	12.6 in	320 mm
Height between platform and ground	20.7 in	525 mm
Platform tail turning radius	29.5 in	750 mm
Length to center of rollers	62.6 in	1590 mm
Fuel tank capacity	7.9 gal	30 L
Hydraulic oil tank capacity	6.6 gal	25 L
Track gauge	62.6 in	1590 mm
Working Pressure	3,481 psi	24 MPa
Ground Contact Pressure	4.4 psi	30 kPa
Arm length	45.3 in	1150 mm
Boom length	79.5 in	2020 mm
Steering head angle	47° (L) / 74° (R)	47° (L) / 74° (R)
Flow rate	16.3 gal/min	61.6 L/min

**BUILT ON TRADITION,
ENGINEERED FOR
THE FUTURE**



For More Information :
+1 (475) 470-7951



WWW.YUCHAIAMERICAS.COM

ORDER NOW

