



**BUILT ON TRADITION
ENGINEERED FOR
THE FUTURE**

AMERICAN-GRADE QUALITY, GLOBALLY RECOGNIZED
MINI EXCAVATORS AND SKID STEERS

AMERICAS
YUCHAI
HEAVY INDUSTRY
— Since 1989



YUCHAI U35

ENGINE POWER **27.4 HP/2200 RPM**

MACHINE WEIGHT **8,510 LBS**

BUCKET CAPACITY **0.16 YD³**

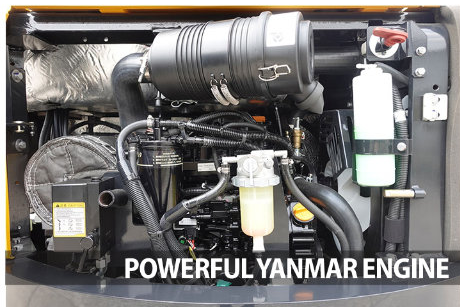


WWW.YUCHAIAMERICAS.COM

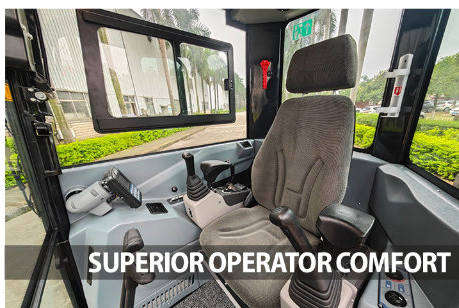
YUCHAI U35 ZERO TAIL



PRECISE CONTROL



POWERFUL YANMAR ENGINE



SUPERIOR OPERATOR COMFORT



RUBBER TRACKS



LOAD SENSITIVE SYSTEM



SUPERIOR WORKING EFFICIENCY

Excavator Model – U35

Basic parameter

	Imperial Units	Metric Units
Machine weight	8,510 lbs	3860 kg
Bucket capacity	0.16 yd ³	0.12 m ³
Width of bucket	24.3 in	617 mm

Performance parameter

Engine model	Yanmar 3TNV88 Yanmar 3TNV88F	Yanmar 3TNV88 Yanmar 3TNV88F
Engine power	24.4 hp/2200 rpm 27.4 hp/2200 rpm	18.2 kW/2200 rpm 20.4 kW/2200 rpm
Max. Gradeability	35°	35°
Max. digging force of arm	5,805 lbf	25.8 kN
Max. digging force of bucket	7,352 lbf	32.7 kN
Traveling speed	3.0/1.9 mph	4.8/3.10 km/h
Max. hauling force	6,520 lbf	29 kN
Slewing speed of platform	11~13 rpm	11~13 rpm

Operating parameter

Max. digging height	202.9 in	5156 mm
Max. digging depth	124.8 in	3170 mm
Max. digging radius	218.7 in	5557 mm
Max. digging radius on ground level	214.1 in	5438 mm
Max. dumping height	141.3 in	3588 mm
Min. slewing radius	89.0 in	2260 mm
Max. vertical digging depth	103.1 in	2620 mm
Max. dozer blade height	14.7 in	373 mm
Max. dozer blade depth	16.7 in	425 mm

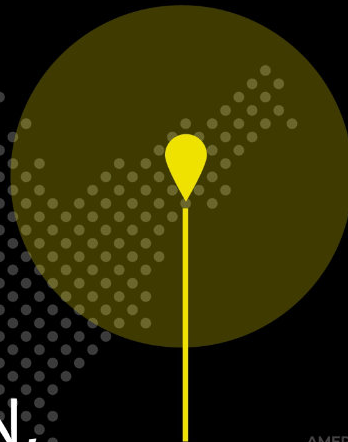
Transportation dimension

Overall length	190.9 in	4853 mm
Overall width	70.9 in	1800 mm
Overall height	101.4 in	2575 mm

Other Parameter

Width of undercarriage	70.9 in	1800 mm
Length of track	82.4 in	2093 mm
Width of track	11.8 in	300 mm
Height between undercarriage and ground	13.7 in	347 mm
Height between platform and ground	22.5 in	572 mm
Platform tail turning radius	39.9 in	1014 mm
Length to center of rollers	59.1 in	1500 mm
Fuel tank capacity	13.7 gal	52 L
Hydraulic oil tank capacity	10.6 gal	40 L
Track gauge	63.8 in	1620 mm
Working Pressure	3,481 psi	24 MPa
Ground Contact Pressure	4.8 psi	33 kPa
Arm length	55.1 in	1400 mm
Boom length	98.4 in	2500 mm
Steering head angle	67.7° (L) / 53.7° (R)	67.7° (L) / 53.7° (R)
Flow rate	23.8 gal/min	90 L/min

**BUILT ON TRADITION,
ENGINEERED FOR
THE FUTURE**



For More Information :
+1 (475) 470-7951



WWW.YUCHAIAMERICAS.COM

ORDER NOW

