



**BUILT ON TRADITION
ENGINEERED FOR
THE FUTURE**

AMERICAN-GRADE QUALITY, GLOBALLY RECOGNIZED
MINI EXCAVATORS AND SKID STEERS

AMERICAS
YUCHAI
HEAVY INDUSTRY
— Since 1989



YUCHAI U17

ENGINE POWER 15.8 HP/2300 RPM

MACHINE WEIGHT 3,792 LBS

BUCKET CAPACITY 0.065 YD³

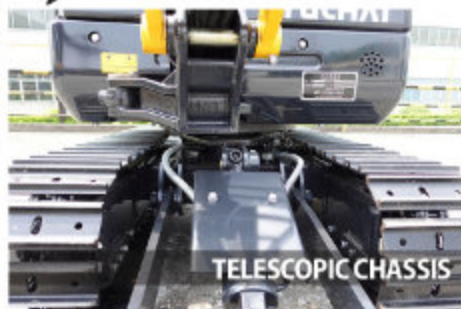


WWW.YUCHAIAMERICAS.COM

YUCHAI U17



IMPROVED COMFORT



TELESCOPIC CHASSIS



SWIFTLY DETACHABLE CANOPY



EASY MAINTENANCE



POWERFUL KUBOTA ENGINE



EXCEPTIONAL UPHILL PERFORMANCE

Excavator Model – U17

Basic parameter

	Imperial Units	Metric Units
Machine weight	3,792 lbs	1720 kg
Bucket capacity	0.065 yd ³	0.05 m ³
Width of bucket	18.5 in	470 mm

Performance parameter

Engine model	Kubota D902-E4B	Kubota D902-E4B
Engine power	15.8 hp/2300 rpm	11.8 kW/2300 rpm
Max. Gradeability	30°	30°
Max. digging force of arm	2,136 lbf	9.5 kN
Max. digging force of bucket	3,866 lbf	17.2 kN
Traveling speed	1.2/2.5 mph	2.0/4.0 km/h
Max. hauling force	5,620 lbf	25 kN
Slewing speed of platform	8.5~10.5 rpm	8.5~10.5 rpm

Operating parameter

Max. digging height	141.7 in	3600 mm
Max. digging depth	90.9 in	2310 mm
Max. digging radius	154.7 in	3930 mm
Max. digging radius on ground level	152.4 in	3870 mm
Max. dumping height	97.8 in	2485 mm
Min. slewing radius	59.1 in	1500 mm
Max. vertical digging depth	75.6 in	1920 mm

Transportation dimension

Overall length	154.7 in	3930 mm
Overall width	39.0 in	990 mm
Overall height	92.1 in	2340 mm

Other Parameter

Width of undercarriage	39.0/48.8 in	990/1240 mm
Length of track	63.0 in	1600 mm
Width of track	9.1 in	230 mm
Height between undercarriage and ground	5.9 in	150 mm
Height between platform and ground	17.7 in	450 mm
Platform tail turning radius	24.4 in	620 mm
Length to center of rollers	48.4 in	1230 mm
Fuel tank capacity	4.2 gal	16 L
Hydraulic oil tank capacity	4.2 gal	16 L
Track gauge	29.9/39.8 in	760/1010 mm
Working Pressure	3,481 psi	24 MPa
Ground Contact Pressure	137.8 psi	950 kPa
Arm length	72.0 in	1828 mm

Boom length

Steering head angle	60° (L) / 55° (R)	60° (L) / 55° (R)
Flow rate	17.0 gal/min	64.4 L/min

AMERICAS
YUCHAI
HEAVY INDUSTRY
— Since 1989



YUCHAI U18

ENGINE POWER **20.4 HP/2500 RPM**

MACHINE WEIGHT **4,409 LBS**

BUCKET CAPACITY **0.065 YD³**



WWW.YUCHAIAMERICAS.COM

YUCHAI U18



IMPROVED COMFORT



LOAD SENSITIVE SYSTEM



IMPROVED STABILITY



SWIFTLY DETACHABLE CANOPY



POWERFUL YANMAR ENGINE



RUBBER TRACKS

Excavator Model – U18

Basic parameter

	Imperial Units	Metric Units
Machine weight	3,968 lbs (canopy) 4,409 lbs (cabin)	1800 kg (canopy) 2000 kg (cabin)
Bucket capacity	0.065 yd ³	0.05 m ³
Width of bucket	18.5 in	470 mm

Performance parameter

Engine model	Yanmar 3TNV76 Yanmar 3TNV80F	Yanmar 3TNV76 Yanmar 3TNV80F
Engine power	19.4 hp/2400 rpm 20.4 hp/2500 rpm	14.5 kW/2400 rpm 15.2 kW/2500 rpm
Max. Gradeability	30°	30°
Max. digging force of arm	2,136 lbf	9.5 kN
Max. digging force of bucket	3,866 lbf	17.2 kN
Traveling speed	1.2/2.5 mph	2.0/4.0 km/h
Max. hauling force	4,946 lbf	22 kN
Slewing speed of platform	11 rpm	11 rpm

Operating parameter

Max. digging height	142.3 in	3615 mm
Max. digging depth	90.6 in	2300 mm
Max. digging radius	162.4 in	4125 mm
Max. digging radius on ground level	159.8 in	4060 mm
Max. dumping height	98.4 in	2500 mm
Min. slewing radius	66.5 in	1690 mm
Max. vertical digging depth	75 in	1905 mm
Max. dozer blade height	9.6 in	245 mm
Max. dozer blade depth	9.6 in	245 mm

Transportation dimension

Overall length	147.6 in	3750 mm
Overall width	42.5 in	1080 mm
Overall height	92.5 in (Canopy) 93.1 in (Cabin)	2350 mm (Canopy) 2365 mm (Cabin)

Other Parameter

Width of undercarriage	42.5~55.1 in	1080~1400 mm
Length of track	62.4 in	1585 mm
Width of track	9.1 in	230 mm
Height between undercarriage and ground	5.7 in	145 mm
Height between platform and ground	18.3 in	465 mm
Platform tail turning radius	27.6 in	700 mm
Length to center of rollers	48.4 in	1230 mm
Fuel tank capacity	6.6 gal	25 L
Hydraulic oil tank capacity	5.7 gal	21.5 L
Track gauge	33.5 in / 46.1 in	850 mm / 1170 mm
Working Pressure	3,481 psi	24 MPa
Ground Contact Pressure	4.4 psi	30 kPa
Arm length	37.4 in	950 mm
Boom length	71.9 in	1828 mm
Steering head angle	60° (L) / 55° (R)	60° (L) / 55° (R)
Flow rate	16.3 gal/min	61.6 L/min

AMERICAS
YUCHAI
HEAVY INDUSTRY
— Since 1989



YUCHAI U20

ENGINE POWER **20.4 HP/2500 RPM**

MACHINE WEIGHT **4,409 LBS**

BUCKET CAPACITY **0.065 YD³**



WWW.YUCHAIAMERICAS.COM
YUCHAI U20



IMPROVED STABILITY



POWERFUL YANMAR ENGINE



COMFORTABLE DRIVING EXPERIENCE



TELESCOPIC CHASSIS



LOAD SENSITIVE SYSTEM



SWIFTLY DETACHABLE CANOPY

Excavator Model – U20

Basic parameter

	Imperial Units	Metric Units
Machine weight	3,968 lbs (Canopy) 4,409 lbs (Cabin)	1800 kg (Canopy) 2000 kg (Cabin)
Bucket capacity	0.065 yd ³	0.05 m ³
Width of bucket	18.5 in	470 mm

Performance parameter

Engine model	Yanmar 3TNV76 3TNV80F	Yanmar 3TNV76 3TNV80F
Engine power	19.4 hp/2400 rpm 20.4 hp/2500 rpm	14.5 kW/2400 rpm 15.2 kW/2500 rpm
Max. Gradeability	30°	30°
Max. digging force of arm	2,136 lbf	9.5 kN
Max. digging force of bucket	3,866 lbf	17.2 kN
Traveling speed	1.2/2.5 mph	2.0/4.0 km/h
Max. hauling force	4,946 lbf	22 kN
Slewing speed of platform	11 rpm	11 rpm

Operating parameter

Max. digging height	142.3 in	3615 mm
Max. digging depth	90.6 in	2300 mm
Max. digging radius	162.4 in	4125 mm
Max. digging radius on ground level	159.8 in	4060 mm
Max. dumping height	98.4 in	2500 mm
Min. slewing radius	66.5 in	1690 mm
Max. vertical digging depth	75 in	1905 mm
Max. dozer blade height	9.6 in	245 mm
Max. dozer blade depth	9.6 in	245 mm

Transportation dimension

Overall length	147.6 in	3750 mm
Overall width	42.5 in	1080 mm
Overall height	92.5 in (Canopy) 93.1 in (Cabin)	2350 mm (Canopy) 2365 mm (Cabin)

Other Parameter

Width of undercarriage	42.5~55.1 in	1080~1400 mm
Length of track	62.4 in	1585 mm
Width of track	9.1 in	230 mm
Height between undercarriage and ground	5.7 in	145 mm
Height between platform and ground	18.3 in	465 mm
Platform tail turning radius	27.6 in	700 mm
Length to center of rollers	48.4 in	1230 mm
Fuel tank capacity	6.6 gal	25 L
Hydraulic oil tank capacity	5.7 gal	21.5 L
Track gauge	33.5 in / 46.1 in	850 mm / 1170 mm
Working Pressure	3,481 psi	24 MPa
Ground Contact Pressure	4.4 psi	30 kPa
Arm length	37.4 in	950 mm
Boom length	71.9 in	1828 mm
Steering head angle	60° (L) / 55° (R)	60° (L) / 55° (R)
Flow rate	16.3 gal/min	61.6 L/min

AMERICAS
YUCHAI
HEAVY INDUSTRY
— Since 1989



YUCHAI U27

ENGINE POWER **20.4 HP/2500 RPM**

MACHINE WEIGHT **6,039 LBS**

BUCKET CAPACITY **0.12 YD³**



WWW.YUCHAIAMERICAS.COM

YUCHAI U27



PRECISE CONTROL



POWERFUL YANMAR ENGINE



COMFORTABLE DRIVING EXPERIENCE



RUBBER TRACKS



LOAD SENSITIVE SYSTEM



LOW FUEL CONSUMPTION

Excavator Model – U27

	Imperial Units	Metric Units
Basic parameter		
Machine weight	5,732 lbs (Canopy) 6,039 lbs (Cabin)	2600 kg (Canopy) 2740 kg (Cabin)
Bucket capacity	0.12 yd ³	0.09 m ³
Width of bucket	20.1 in	510 mm
Performance parameter		
Engine model	Yanmar 3TNV76 Yanmar 3TNV80F	Yanmar 3TNV76 Yanmar 3TNV80F
Engine power	19.4 hp/2400 rpm 20.4 hp/2500 rpm	14.5 kW/2400 rpm 15.2 kW/2500 rpm
Max. Gradeability	30°	30°
Max. digging force of arm	3,239 lbf	14.4 kN
Max. digging force of bucket	5,194 lbf	23.1 kN
Traveling speed	1.4/2.6 mph	2.3/4.2 km/h
Max. hauling force	5,845 lbf	26 kN
Slewing speed of platform	10~12 rpm	10~12 rpm
Operating parameter		
Max. digging height	164.2 in	4170 mm
Max. digging depth	100.0 in	2540 mm
Max. digging radius	177.9 in	4520 mm
Max. digging radius on ground level	173.2 in	4400 mm
Max. dumping height	109.4 in	2780 mm
Min. slewing radius	76.8 in	1950 mm
Max. vertical digging depth	88.2 in	2240 mm
Max. dozer blade height	13.4 in	340 mm
Max. dozer blade depth	14.0 in	355 mm
Transportation dimension		
Overall length	161.8 in	4110 mm
Overall width	59.1 in	1500 mm
Overall height	98.0 in	2490 mm
Other Parameter		
Width of undercarriage	59.1 in	1500 mm
Length of track	80.3 in	2040 mm
Width of track	9.8 in	250 mm
Height between undercarriage and ground	12.6 in	320 mm
Height between platform and ground	20.7 in	525 mm
Platform tail turning radius	29.5 in	750 mm
Length to center of rollers	62.6 in	1590 mm
Fuel tank capacity	7.9 gal	30 L
Hydraulic oil tank capacity	6.6 gal	25 L
Track gauge	62.6 in	1590 mm
Working Pressure	3,481 psi	24 MPa
Ground Contact Pressure	4.4 psi	30 kPa
Arm length	45.3 in	1150 mm
Boom length	79.5 in	2020 mm
Steering head angle	47° (L) / 74° (R)	47° (L) / 74° (R)
Flow rate	16.3 gal/min	61.6 L/min

AMERICAS
YUCHAI
HEAVY INDUSTRY
— Since 1989



YUCHAI U35

ENGINE POWER **27.4 HP/2200 RPM**

MACHINE WEIGHT **8,510 LBS**

BUCKET CAPACITY **0.16 YD³**



Excavator Model – U35

	Imperial Units	Metric Units
Basic parameter		
Machine weight	8,510 lbs	3860 kg
Bucket capacity	0.16 yd ³	0.12 m ³
Width of bucket	24.3 in	617 mm
Performance parameter		
Engine model	Yanmar 3TNV88 Yanmar 3TNV88F	Yanmar 3TNV88 Yanmar 3TNV88F
Engine power	24.4 hp/2200 rpm 27.4 hp/2200 rpm	18.2 kW/2200 rpm 20.4 kW/2200 rpm
Max. Gradeability	35°	35°
Max. digging force of arm	5,805 lbf	25.8 kN
Max. digging force of bucket	7,352 lbf	32.7 kN
Traveling speed	3.0/1.9 mph	4.8/3.10 km/h
Max. hauling force	6,520 lbf	29 kN
Slewing speed of platform	11~13 rpm	11~13 rpm
Operating parameter		
Max. digging height	202.9 in	5156 mm
Max. digging depth	124.8 in	3170 mm
Max. digging radius	218.7 in	5557 mm
Max. digging radius on ground level	214.1 in	5438 mm
Max. dumping height	141.3 in	3588 mm
Min. slewing radius	89.0 in	2260 mm
Max. vertical digging depth	103.1 in	2620 mm
Max. dozer blade height	14.7 in	373 mm
Max. dozer blade depth	16.7 in	425 mm
Transportation dimension		
Overall length	190.9 in	4853 mm
Overall width	70.9 in	1800 mm
Overall height	101.4 in	2575 mm
Other Parameter		
Width of undercarriage	70.9 in	1800 mm
Length of track	82.4 in	2093 mm
Width of track	11.8 in	300 mm
Height between undercarriage and ground	13.7 in	347 mm
Height between platform and ground	22.5 in	572 mm
Platform tail turning radius	39.9 in	1014 mm
Length to center of rollers	59.1 in	1500 mm
Fuel tank capacity	13.7 gal	52 L
Hydraulic oil tank capacity	10.6 gal	40 L
Track gauge	63.8 in	1620 mm
Working Pressure	3,481 psi	24 MPa
Ground Contact Pressure	4.8 psi	33 kPa
Arm length	55.1 in	1400 mm
Boom length	98.4 in	2500 mm
Steering head angle	67.7° (L) / 53.7° (R)	67.7° (L) / 53.7° (R)
Flow rate	23.8 gal/min	90 L/min

AMERICAS
YUCHAI
YUCHAI HEAVY INDUSTRY
— Since 1989



YUCHAI YC60

ENGINE POWER **46.9 HP/2200 RPM**

MACHINE WEIGHT **13,228 LBS**

BUCKET CAPACITY **0.30 YD³**



OUTSTANDING PERFORMANCE



THREE-PUMP HYDRAULIC SYSTEM



SPACIOUS NEW LARGE CABIN



SUFFICIENT TRACTION

Excavator Model – YC60

	Imperial Units	Metric Units
Basic parameter		
Machine weight	13,228 lbs	6000 kg
Bucket capacity	0.30 yd ³	0.23 m ³
Width of bucket	30.5 in	775 mm
Performance parameter		
Engine model	Kubota V2607	Kubota V2607
Engine power	41.2 hp/2200 rpm 46.9 hp/2200 rpm	30.7 kW/2200 rpm / 35 kW/2200 rpm
Max. Gradeability	35°	35°
Max. digging force of arm	6,182 lbf	27.5 kN
Max. digging force of bucket	8,232 lbf	36.6 kN
Traveling speed	2.2/1.4 mph	3.6/2.2 km/h
Max. hauling force	10,453 lbf	46.5 kN
Slewing speed of platform	11~13.5 rpm	11~13.5 rpm
Operating parameter		
Max. digging height	232.3 in	5900 mm
Max. digging depth	154.9 in	3935 mm
Max. digging radius	256.9 in	6520 mm
Max. digging radius on ground level	251.4 in	6385 mm
Max. dumping height	158.7 in	4030 mm
Min. slewing radius	105.7 in	2685 mm
Max. vertical digging depth	132.7 in	3370 mm
Transportation dimension		
Overall length	239.5 in	6085 mm
Overall width	77.2 in	1962 mm
Overall height	103.7 in	2635 mm
Other Parameter		
Width of undercarriage	75.6 in	1920 mm
Length of track	102.4 in	2600 mm
Width of track	15.7 in	400 mm
Height between undercarriage and ground	13.2 in	335 mm
Height between platform and ground	28.3 in	720 mm
Platform tail turning radius	65.7 in	1670 mm
Length to center of rollers	81.1 in	2060 mm
Fuel tank capacity	32.2 gal	122 L
Hydraulic oil tank capacity	20.3 gal	77 L
Track gauge	59.8 in	1520 mm
Working Pressure	3,625 psi	25 MPa
Ground Contact Pressure		
Arm length	66.9 in	1699.2 mm
Boom length	122.8 in	3118 mm
Steering head angle	—	—
Flow rate	36.6 gal/min	138.6 L/min

AMERICAS
YUCHAI
YUCHAI HEAVY INDUSTRY
-- Since 1989



YUCHAI YC80

ENGINE POWER **56.8 HP/2000 RPM**

MACHINE WEIGHT **17,200 LBS**

BUCKET CAPACITY **0.34 YD³**



YUCHAI YC80
 WWW.YUCHAIAMERICAS.COM



EXCELLENT PERFORMANCE



SUFFICIENT TRACTION



SPACIOUS NEW LARGE CABIN



HIGHER ENERGY EFFICIENCY

Excavator Model – YC80	Imperial Units	Metric Units
Basic parameter		
Machine weight	17,200 lbs	7800 kg
Bucket capacity	0.34 yd ³	0.26 m ³
Width of bucket	33.27 in	845 mm
Performance parameter		
Engine model	Yanmar 4TNV99 / 4TNV98C (EuroV)	Yanmar 4TNV99 / 4TNV98C (EuroV)
Engine power	59.6 hp/2100 rpm / 56.8 hp/2000 rpm	44.4 kW/2100 rpm / 42.4 kW/2000 rpm
Max. Gradeability	35°	35°
Max. digging force of arm	8,543 lbf	38 kN
Max. digging force of bucket	12,597 lbf	56 kN
Traveling speed	2.4/1.6 mph	3.9/2.6 km/h
Max. hauling force	15,297 lbf	68 kN
Slewing speed of platform	9~13 rpm	9~13 rpm
Operating parameter		
Max. digging height	280.0 in	7112 mm
Max. digging depth	158.3 in	4022 mm
Max. digging radius	251.6 in	6390 mm
Max. digging radius on ground level	246.0 in	6248 mm
Max. dumping height	199.0 in	5055 mm
Min. slewing radius	74.0 in	1881 mm
Max. vertical digging depth	138.4 in	3515 mm
Transportation dimension		
Overall length	244.8 in	6215 mm
Overall width	89.0 in	2260 mm
Overall height	106.5 in	2705 mm
Other Parameter		
Width of undercarriage	84.6 in	2150 mm
Length of track	109.6 in	2783 mm
Width of track	17.7 in	450 mm
Height between undercarriage and ground	15.0 in	380 mm
Height between platform and ground	31.1 in	790 mm
Platform tail turning radius	74.0 in	1881 mm
Length to center of rollers	86.6 in	2200 mm
Fuel tank capacity	39.9 gal	151 L
Hydraulic oil tank capacity	33.0 gal	125 L
Track gauge	86.6 in	2200 mm
Working Pressure	3,988 psi	27.5 MPa
Ground Contact Pressure		
Arm length	65.0 in	1650 mm
Boom length	146.1 in	3710 mm
Steering head angle	—	—
Flow rate	44.4+4.6 gal/min	168+17.6 L/min



Global first wheel side motor driving technology
Global first wheel side AUTO-HOLD technology
Integrated chassis
Battery life increased by **32%**

Safe
& Reliable

Battery
Advantages

30000
Working Hours

16
Years Working
Life



Saving **90%** on fuel costs
Zero maintenance during **2000** hours
Low failure rate

YUCHAI SKID STEER

ENGINE POWER **28.6 HP**
MACHINE WEIGHT **3,109 LBS**
ENDURANCE **6-8 H**



YUCHAI S35 SKID STEER

WWW.YUCHAIAMERICAS.COM



SUSPENDED SEAT



ZERO-EMISSION



EFFICIENT OPERATION



COMPACT AND FLEXIBLE

Excavator Model – S35	Imperial Units	Metric Units
Technical Data		
Rated load (ISO14397-1)	772 lbs	350 kg
Tipping Load (ISO14397-1)	1,499 lbs	680 kg
Boom rising force	1,822 lbf	8100 N
Bucket rising force	2,023 lbf	9000 N
Max. travel speed (low gear)	6.5 mph	10.5 km/h
Machine weight	3,109 lbs	1410 kg
Battery Power	28.6 hp	21.3 kWh
Endurance	6-8 h	6-8 h
Steering	The direction and speed are controlled by the left and right potentiometer handles	The direction and speed are controlled by the left and right potentiometer handles
Lifting and dumping	Separately controlled by left and right foot pedals	Separately controlled by left and right foot pedals
Front Hydraulic Auxiliary (Standard)	Controlled by right control lever	Controlled by right control lever
Dimensions		
A Overall operating height	124.0 in	3150 mm
B Height to top of cab	71.4 in	1814 mm
C Departure angle	25°	25°
D Ground clearance	5.6 in	141 mm
E Wheelbase	28.4 in	722 mm
F Overall length without standard bucket	83.5 in	2120 mm
G Overall length with standard bucket	102.4 in	2600 mm
H Maximum angle of flat ground	22°	22°
I Unloading height	76.1 in	1934 mm
J Height to bucket hinge pin	94.5 in	2399 mm
K Loading distance at Max. unloading height	15.7 in	400 mm
L Dumping angle at maximum height	34°	34°
M Rollback of bucket at full height	97°	97°
N Bucket width	43.9 in	1115 mm
O Radius of gyration	61.3 in	1557 mm
P Tread	29.6 in	752 mm
Q Machine width	37.4 in	950 mm
Attachments	48° angle-broom	48° angle-broom

**BUILT ON TRADITION,
ENGINEERED FOR
THE FUTURE**



For More Information :
+1 (475) 470-7951



WWW.YUCHAIAMERICAS.COM

ORDER NOW

